

AL-B10 - advertising barrier

Advertising aluminum barriers are designed to not only not only helping with excellent organization of mass events but it's used to suspend various types of advertising to create an ideal alternative to the patronage of the event.

| Technical data | |
|----------------|---------|
| Width | 2 m |
| Length | 0,64 m |
| Height | 1 m |
| Weight | 10,5 kg |



AL-B10k - narożnik barierki reklamowej

Angles revolving advertising barrier perfectly cooperate with the advertising barrier. Construction of three independent hinges allows you to create any configuration and barrier shape.

| Technical data | |
|----------------|--------|
| Width | 1 m |
| Length | 0,05 m |
| Height | 1 m |
| Weight | 9,8 kg |



AL-B11 - angle revolving barrier

The lightest corner barrier in our offer, which allows to create any configuration.

| Technical data | |
|----------------|-------|
| Width | 1 m |
| Length | 0,3 m |
| Height | 1,2 m |
| Weight | 11 kg |



AL-B12 - flexi barrier

Flexi Barrier is used to adjust the height difference in crowd barrier system, especially for curbs or when the ground is not on the same level. Adjustment is the vertical and horizontal. This system facilitates the work of concert planners because it's ideal for uneven concert ground.

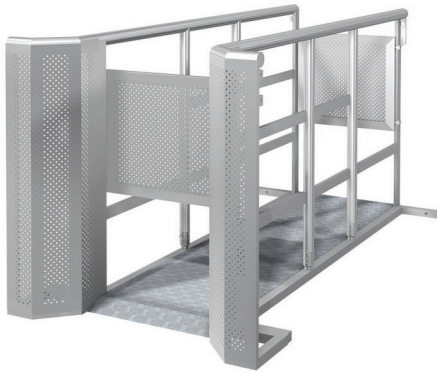
| Technical data | |
|-----------------------|---------------------------|
| Width | 0,6 m |
| Length | 0,3 m |
| Height | 1,2 m |
| Vertical adjustment | 0-10 cm; 0-15 cm; 0-20 cm |
| Horizontal adjustment | 0 - 5 cm |
| Weight | 10 kg |



AL-P1 - line-up gate

Aluminium entrance systems is used for professional entrance ways for mass events such as festivals, concerts, sport events etc. They are providing perfect control of areas with large queuing crowds to manage the ingress of the crowd without any sound disturbance.

| Technical data | |
|-----------------|---------|
| Internal width | 0,6 m |
| Internal length | 2 m |
| External width | 1,14 m |
| External length | 2,36 m |
| Height | 1,2 m |
| Weight | 38,6 kg |



AL-P2 - line-up gate

Aluminium line up gate systems is used for professional entrance ways for mass events such as festivals, concerts, sport events etc. for disabled people. They are providing perfect control of areas with large queuing crowds to manage the ingress of the crowd without any sound disturbance.

| Technical data | |
|-----------------|---------|
| Internal width | 1 m |
| Internal length | 2 m |
| External width | 1,54 m |
| External length | 2,36 m |
| Height | 1,2 m |
| Weight | 47,5 kg |



AL-W1 - aluminium barrier trolley

The barriers can be stored and transported in 10 piece in aluminium barrier trolley.

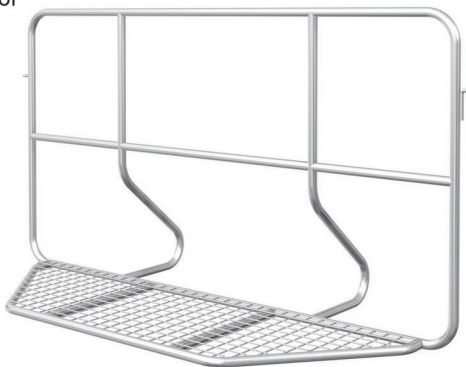
| Technical data | |
|----------------|--------|
| Width | 1,38 m |
| Length | 1,1 m |
| Height | 1,3 m |
| Weight | 54 kg |



AL-B13 - Light steel police barrier

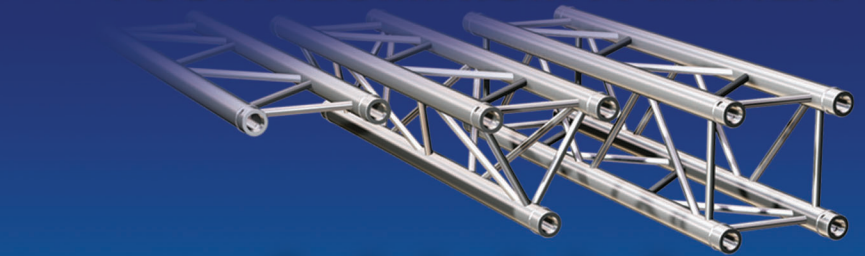
Steel light police barrier is great alternative for heavy steel barrier. Because of their light weight it's simple in usage and assembly. This type of barrier is mostly used in second line fences.

| Technical data | |
|----------------|--------|
| Width | 2 m |
| Length | 0,92 m |
| Height | 1,1 m |
| Weight | 27 kg |



ALSPAW

YOUR ALUMINIUM PARTNER



Crowd barriers

ALSPAW GROUP
ul. Batorego 29, 63-400 Ostrów Wielkopolski, POLAND
phone +48 62 592 50 80, fax +48 62 592 50 90
e-mail: alspaw@alspaw.com.pl



www.alspaw.com.pl

AL-B1 - straight barrier

Straight barrier is used to control and stop a large crowd pressure. Is designed to keep the audience at a distance from the scene. It is durable, strong and lightweight, which makes it a favourite among event organisers looking for a safe. Fully foldable construction saves space during transport, low weight is helpful during assembly.

| Technical data | |
|----------------|---------|
| Width | 1 m |
| Length | 1,28 m |
| Height | 1,2 m |
| Weight | 38,6 kg |



AL-B4w - corner barrier 22,5° - inward

Corner barriers 22,5° are designed to make special barriers into semicircle or circle shape.

| Technical data | |
|----------------|---------|
| Width | 0,38 m |
| Length | 1,28 m |
| Height | 1,2 m |
| Weight | 13,5 kg |
| Angle | 22,5° |



AL-B6 - steel barrier

Simple construction and ease of usage are their biggest advantages. Steel crowd barriers are mostly used in second line fences and further or as a orthogonal barriers during events.

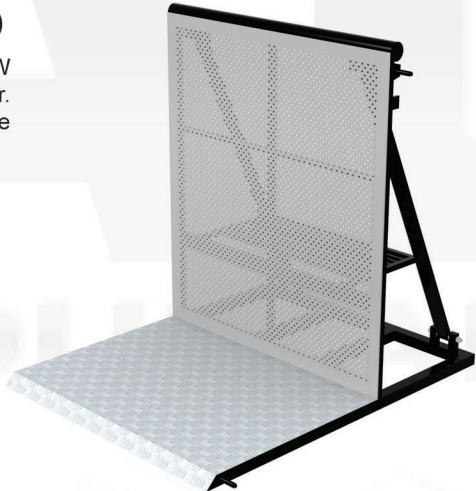
| Technical data | |
|----------------|---------|
| Width | 2,4 m |
| Length | 1 m |
| Height | 1 m |
| Weight | 44,2 kg |



AL-B1s - mid steel-aluminium barrier

Instead of aluminium barrier AL-B1 ALSPAW offers also mid steel-aluminium barrier. The difference is that barrier has steel frame with riveted aluminium sheets.

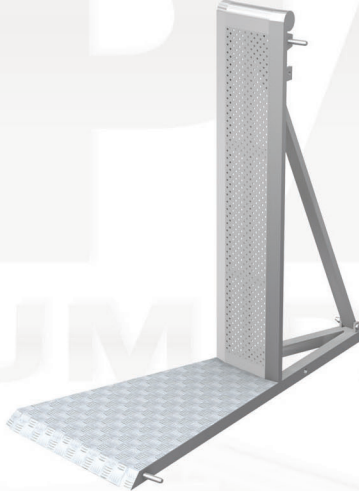
| Technical data | |
|----------------|---------|
| Width | 1 m |
| Length | 1,28 m |
| Height | 1,2 m |
| Weight | 53,4 kg |



AL-B4z - corner barrier 22,5° - outward

Corner barriers 22,5° are designed to make special barriers into semicircle or circle shape.

| Technical data | |
|----------------|--------|
| Width | 0,26 m |
| Length | 1,28 m |
| Height | 1,2 m |
| Weight | 15 kg |
| Angle | 22,5° |



AL-B7 - barrier with cable pass

This type of barrier has a specially designed cable pass which is helpful to the assembly of sound equipment and lighting to the event.

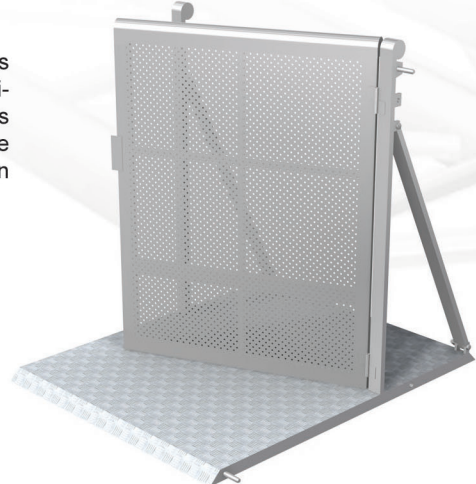
| Technical data | |
|----------------|--------|
| Width | 1 m |
| Length | 1,28 m |
| Height | 1,2 m |
| Weight | 17 kg |



AL-B2 - doorway barrier gate

Doorway barrier gate is used primarily as a separate entrance to the organizers, technicians, medical staff of the event. Facilitates of the logistic organization, security and ease of communication. The barrier also can be used as an entrance for smaller events.

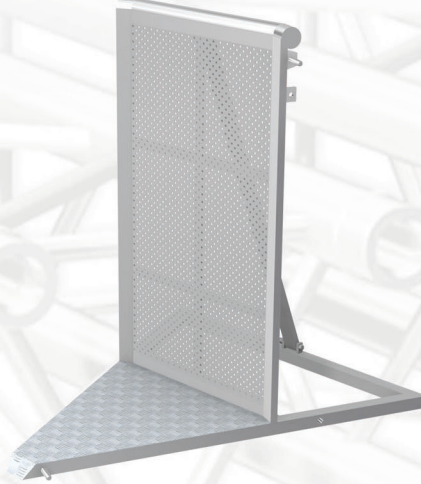
| Technical data | |
|----------------|--------|
| Width | 1 m |
| Length | 1,28 m |
| Height | 1,2 m |
| Weight | 35 kg |



AL-B5w - corner barrier 45° - inward

Corner barriers 45° are designed to make special barriers into semicircle or circle shape.

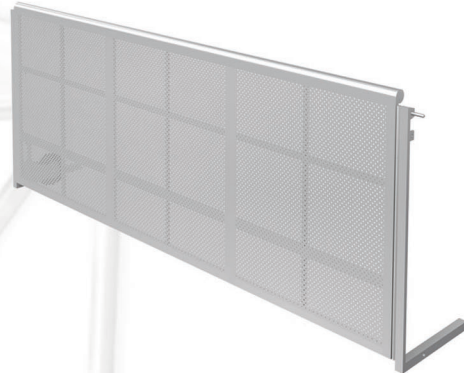
| Technical data | |
|----------------|--------|
| Width | 0,68 m |
| Length | 1,28 m |
| Height | 1,2 m |
| Weight | 19 kg |
| Angle | 45° |



AL-B8 - car gate barrier

Is a perfect solution for cars and trucks entry to the event. It also facilitates the logistic organization the event and medical safety.

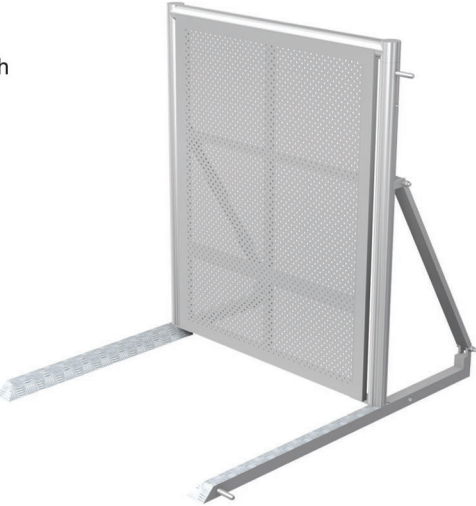
| Technical data | |
|----------------|-------|
| Width | 3 m |
| Length | 0,5 m |
| Height | 1,2 m |
| Weight | 44 kg |



AL-B3 - angle revolving barrier

Barrier Angle AL- B3 is a light barrier which is helpful to create any barriers configuration.

| Technical data | |
|----------------|--------|
| Width | 1 m |
| Length | 1,28 m |
| Height | 1,2 m |
| Weight | 22 kg |



AL-B5z - corner barrier 45° - outward

Corner barriers 45° are designed to make special barriers into semicircle or circle shape.

| Technical data | |
|----------------|---------|
| Width | 0,47 m |
| Length | 1,28 m |
| Height | 1,2 m |
| Weight | 20,8 kg |
| Angle | 45° |



AL-B9 - angle revolving barrier

Angle revolving barrier is compatible to any type of barriers produced by ALSPAW facilitate the creation of any barrier configuration.

| Technical data | |
|----------------|---------|
| Width | 1 m |
| Length | 1,28 m |
| Height | 1,2 m |
| Weight | 38,6 kg |

